

# Changes in Michigan's Child Care Landscape

Changes in Licensed Providers from 2010 to 2017

12.14.2018



**PUBLIC SECTOR  
CONSULTANTS**

Prepared by

Public Sector Consultants

Lansing, Michigan

[www.publicsectorconsultants.com](http://www.publicsectorconsultants.com)

Prepared for

Michigan Department of Education, Office of Great Start

Lansing, Michigan

[www.michigan.gov/mde](http://www.michigan.gov/mde)

# Table of Contents

---

Background. . . . .	4
Key Findings . . . . .	6
Methodology . . . . .	9
Changes in Licensed Providers . . . . .	9
Final Observations . . . . .	17
Michigan . . . . .	18
References . . . . .	19
Appendix. . . . .	20

## Background

---

Access to child care is critical for families. While many parents stay home with their children by choice, others may be forced to leave their job if child care is unavailable. This is not a small issue. The inability to work due to trouble accessing child care that meets their needs can keep families stuck in poverty. Not only does this limited access affect families, but it also affects Michigan's economic growth. In July, the state's unemployment rate was just 4.3 percent, but the lack of available workers constrains potential economic development.

Child care is a complex issue. Many of these issues are addressed in [Building a Better Child Care System](https://www.michigan.gov/documents/mde/Building_a_Better_Child_Care_System_534366_7.pdf) (https://www.michigan.gov/documents/mde/Building\_a\_Better\_Child\_Care\_System\_534366\_7.pdf), an in-depth look at child care in Michigan. This report examines the availability of child care and how this availability has changed over time. Michigan has a strong child care system. The state supports a mixed-delivery early childhood care and education system, and a child care subsidy is available to eligible parents who have their children in school-based settings, licensed centers, and family and group homes. In certain circumstances, families using friends, family, and neighbors to provide care can also access the subsidy, even if these providers are unlicensed.<sup>1</sup>

Michigan has made a concerted effort to increase access to quality programs. The state measures the quality of licensed child care providers through the Great Start to Quality (GSQ) system, a voluntary rating process, using a five-star scale. Approximately half of Michigan providers participate in the system, and approximately 85 percent of rated providers earn three stars or better (Great Start to Quality 2018).

While the system is strong, there are still challenges. Advocates, parents, and others have raised concerns that child care is becoming increasingly difficult to access in their communities. Among the concerns frequently raised are that many home-based providers are retiring with no other alternatives for replacement; and in many communities, licensed infant and toddler care is challenging to find.

Information on the availability of care and how that availability is changing has tended to be anecdotal. People react with concern to the closing of a center or the retirement of home-based providers in their communities and wonder if these events are symptoms of a more serious problem. Assessing this issue is made more complicated by the fact that the population of children is also declining in most Michigan communities. Therefore, decreases in licensed providers and slots are to be expected. While the actual change in the need for child care cannot be observed, the change in the population of young children is a good proxy for this measure. In addition, given the strong recovery in Michigan's economy, the population-adjusted demand for child care is expected to be growing. Therefore, the demand for child care may have declined by an amount somewhat smaller than the decline in the population of children.

---

<sup>1</sup> Care provided by an unlicensed individual is known as "license-exempt" care. License-exempt care can be provided by a relative or can be an unrelated provider if the unrelated provider provides care where the child lives.

This report examines whether the decline in licensed care exceeds the decline in the number of children needing care. The report does this by comparing the recent history of licensed child care programs to population data. Licensing data from 2010 through 2017 was obtained from the Michigan Department of Licensing and Regulatory Affairs (LARA), and these data were compared with population counts from the U.S. Census Bureau. This report analyzes these data at the state and county levels.

The following report presents key findings from the data, an overview of the methodology, illustrates important data trends through county maps, provides a summary of population and licensing data for Michigan, and concludes with detailed data tables. A supplemental report, available as an attachment, offers an overview of changes between 2010 and 2017 for each of Michigan's 83 counties.



## Key Findings

---

**Key finding one: Michigan experienced a significant decline in the number of children from age zero to nine, but this change varies widely by county.**

Between 2010 and 2017, the number of children in Michigan ages zero to nine declined by 5.5 percent.<sup>2</sup> However, this population change varied significantly across counties. Six counties—Iosco, Kalamazoo, Kent, Lake, Missaukee, and Ottawa—experienced population growth. Ottawa County saw the largest increase, adding 518 children, with the number of children ages zero to nine increasing from 36,829 to 37,347—a growth of 1.4 percent. In percentage terms, Missaukee County added the most children—increasing 2.4 percent—from 1,841 to 1,886.

Wayne County experienced the largest decrease in children—falling by 12,410—from 241,073 to 228,663. This 5.1 percent decline was below the state’s decline of 5.5 percent. Many counties, especially rural ones, saw much larger reductions: 31 saw declines more than 10 percent. The largest percentage decline was in Ontonagon County, which dropped 32.5 percent.

It should be noted that the census population counts are estimates and are subject to estimation error. Population data for each of Michigan’s 83 counties is contained in the appendix.

**Key finding two: Total licensed child care slots in Michigan declined by less than the total population of children. At the county level, however, the changes vary widely.**

Between 2010 and 2017, the number of licensed child care slots in Michigan declined by 2.5 percent, compared to a decline of 5.5 percent in the number of children ages zero to nine. At the county level, however, the changes vary widely. The largest percentage increase was in Keweenaw County, which saw 100 percent growth. This increase, however, is driven in large part by the small number of licensed slots, which went from just six to 12. In 2017, Keweenaw County had 157 children between birth and age nine, although it is unclear how many of those children needed child care.

The largest decline was in Oscoda County, which saw a 62 percent decline in licensed slots from 238 to just 90, a particularly large figure given the population of children from birth to age nine was virtually unchanged. The largest increase in the number of licensed slots was in Oakland County, which added 5,412, an 11 percent increase, compared to a population decline of 4.2 percent. The largest number reduction in licensed slots was in Genesee County, which experienced a fall by 9,503 (37 percent) compared to a 12.1 percent decline in children.

The overall number of slots and change by county is contained in the appendix.

---

2 The count of children is Public Sector Consultants’ (PSC’s) calculation using U.S. Census Bureau data. PSC extracted the data using the U.S. Census Bureau’s American Fact Finder tool and used table PEPAGESEX, Annual Estimates of the Resident Population for Selected Age Groups by Sex for the United States, States, Counties, and Puerto Rico Commonwealth and Municipios: April 1, 2010 to July 1, 2017, 2017 Population Estimates.

### **Key finding three: Michigan experienced a shift in licensed child care from family and group home providers to center-based care.**

As noted, the overall number of licensed child care slots declined by 2.5 percent between 2010 and 2017. While this change is modest, it masks much larger changes by provider type. Over this period, the number of licensed slots at centers increased by 5.3 percent, while the number of licensed slots at licensed family providers fell by 38.8 percent, and licensed group homes fell by 34.1 percent.

These statistics show that licensed home-based care is declining in Michigan, while center-based care is rising.<sup>3</sup> What is unclear is whether children who formerly would have been in home-based care are now being cared for at centers, or if these changes represent different factors. For example, it may be that centers are now caring for more children who previously would have been cared for by a stay-at-home parent, and that children who used to be in licensed home care have moved to licensed-exempt care. Of course, it may simply be that children are moving from home-based care to centers. This question, however, cannot be answered with the available data.

### **Key finding four: Center-based infant and toddler care is unavailable in many communities.**

The availability of infant and toddler care is difficult to assess given data limitations. Licensing data indicates the total number of slots a provider has and the earliest age served, but it does not show slots by age. For example, if a center is listed as having 100 slots starting at birth and running through age five, there is no way to see in the data how many of these slots are for infants. This center could have one of these slots—or 50.

Despite this data limitation, it is clear that Michigan has a potentially significant problem with the availability of infant and toddler care, as ten Michigan counties (Alcona, Alpena, Charlevoix, Cheboygan, Keweenaw, Lake, Montmorency, Ontonagon, Presque Isle, and Schoolcraft) do not have any licensed slots at centers that serve children younger than 30 months. This suggests that center-based care for infants and toddlers may be very hard to find in other communities as well, even though the shortfall is masked in the data.

It is also difficult to assess the availability of infant and toddler care in home-based settings. Providers may be licensed to accept infants and toddlers, but this does not mean they are currently serving these children. Additionally, given the steep decline in home-based slots, a lack of center-based slots for infants and toddlers may mean that care is very difficult to find in some communities.

Overall, according to self-reported data, only 70 percent of licensed providers state they serve infants and toddlers, a significant decline from 2010, when 79 percent of licensed providers served infants and toddlers.<sup>4</sup> Part of this decline may reflect the decrease in home-based providers, since many

---

3 The term home-based care is used here to refer generically to both licensed family home care and licensed group home care.

4 Please note that these data are self-reported, so changes may also be the result of changes in reporting accuracy.

of these were likely licensed for infants and toddlers—even if they served few. However, it may also reflect the financial struggles providers face serving infants and toddlers. At centers, the ratio of children to staff is four to one for children from birth through 30 months; eight to one for children from 30 months to three years old; ten to one for three-year-olds; 12 to one for four-year-olds; and 18 to one for school-aged children (see Exhibit 1)<sup>5</sup> (LARA 2014). Family homes and group homes have a six to one ratio for children to caregivers, with family homes having a maximum of six children overall and group homes having a maximum of 12 children (LARA 2009).

**Exhibit 1.** Ratio of Children to Child Care Center Staff by Age

**Center-based Care**

Age	Child-to-caregiver Ratio
Birth to 30 months	4 to 1
30 months to 3 years of age	8 to 1
3 years of age to 4 years of age	10 to 1
4 years of age to school age	12 to 1
School age	18 to 1

**Family and Group Home Providers**

Age	Child-to-caregiver Ratio
Birth to 18 months	2 to 1
Birth to 30 months	4 to 1
All children in home	6 to 1

**Key finding five: Further research is required.**

This analysis provides a first look at the changing landscape of child care in Michigan, but it does not tell the entire story. Questions about the prevalence of child care providers who are not in the system (neither licensed nor subsidized, license exempt) and quality levels still require further investigation to understand the extent of the availability of quality care. Also, while the total population of children age zero to nine provides an approximation of the demand for child care, it does not account for stay-at-home parents or children cared for by family members. These factors could greatly change the need for licensed child care in some communities. In addition, further research showing how children are distributed across the various early education and care programs in Michigan’s mixed-delivery system would be beneficial. These programs include Early Head Start, Head Start, the Great Start Readiness Program, and the child care subsidy.



5 Children related to the care giver who are seven years of age or older can be excluded from the ratio calculation.



## Methodology

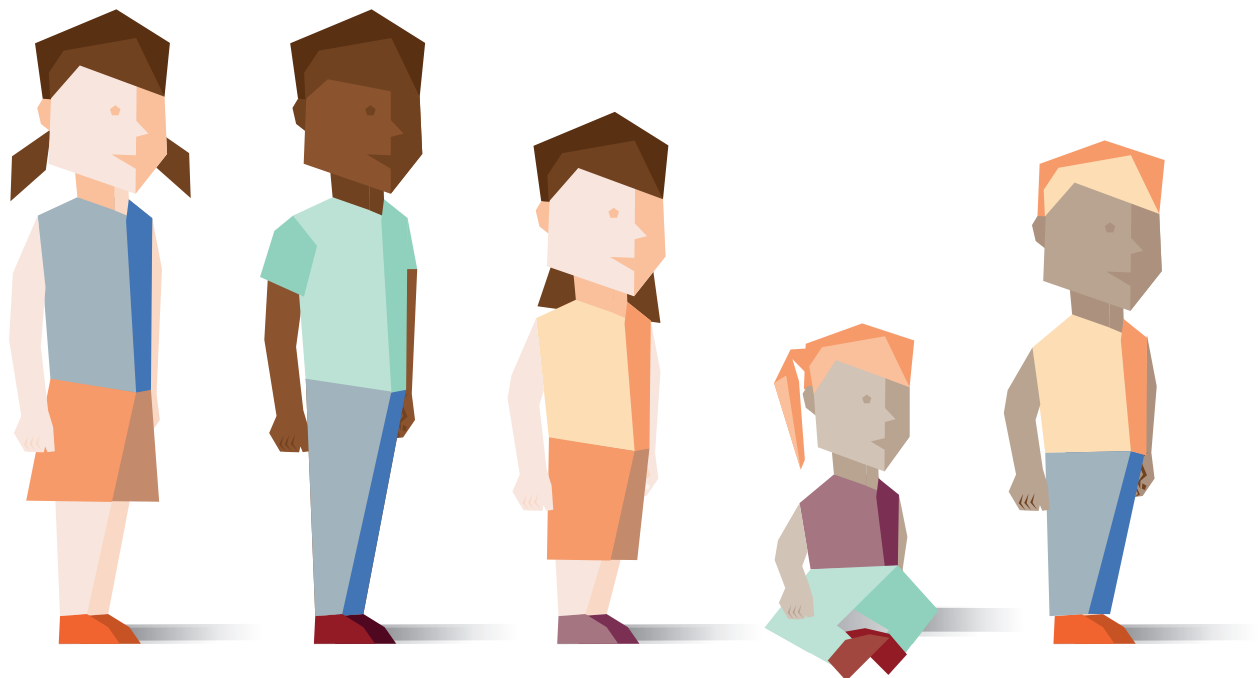
---

Data on licensed providers was provided by LARA. The data was deduplicated to ensure an accurate facility count. Facilities with multiple entries for different age groups were counted once for total number of providers, but the capacity for all entries was included in the total available slots. The original effective date and the date the license was closed were used to determine the years a provider was in operation. These dates were supplemented with license effective date and license expiration date when the original and/or close dates were unavailable. If a facility was in operation for one day within a year (such as closing on January 2) it was counted as in operation for that year. Population data for children by age groups in Michigan was obtained from the U.S. Census Bureau (2018).

## Changes in Licensed Providers

---

The following maps show the changes in child care providers and slots across the state. Note that while an individual county may have an increasing number of slots, it does not mean there are enough for the current population of children with parents who work or would like to work.



### Exhibit 2. Change in the Number of Children Age Zero to Nine, 2010–2017

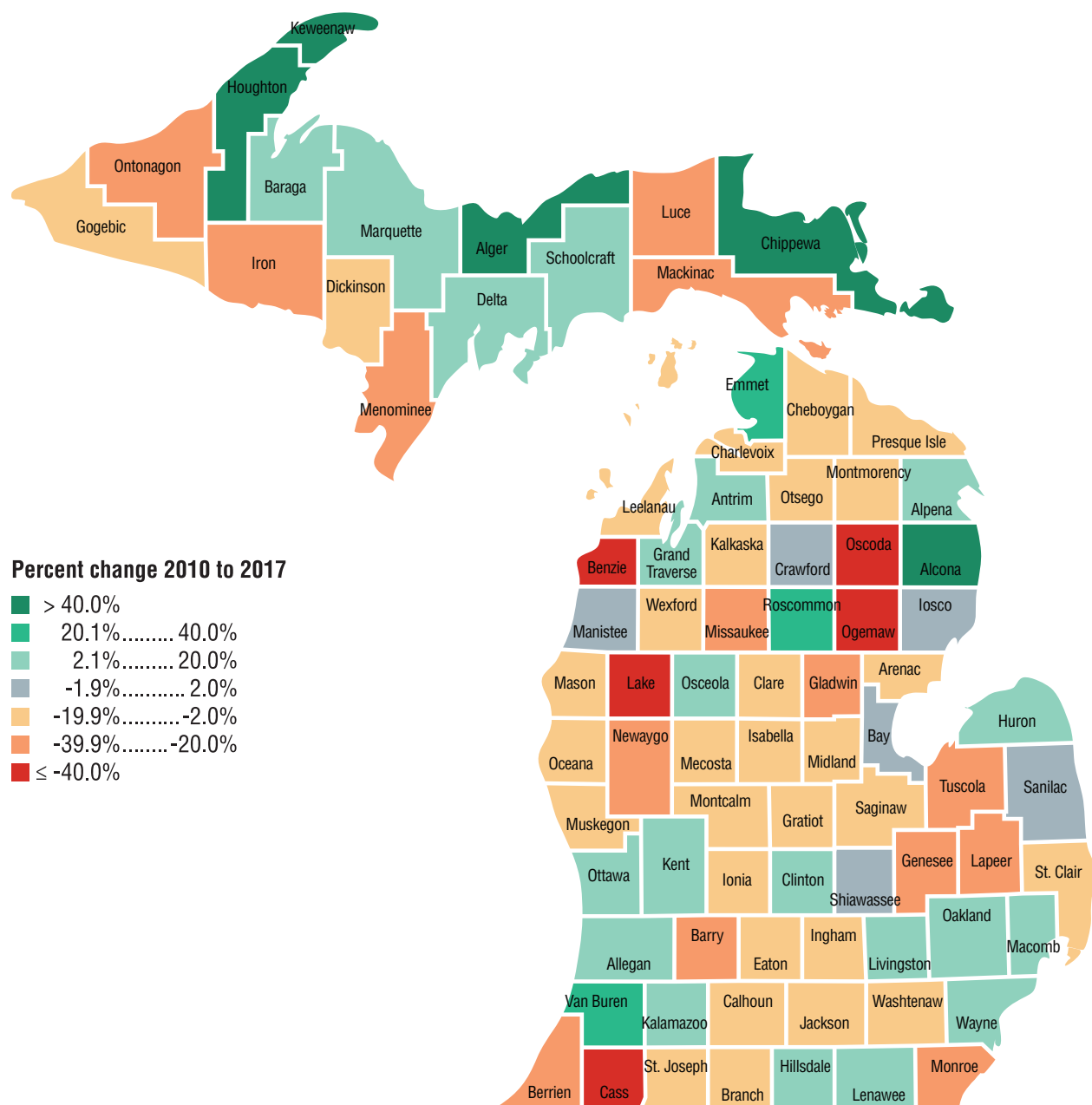


### Exhibit 3. Change in the Number of Providers, 2010–2017



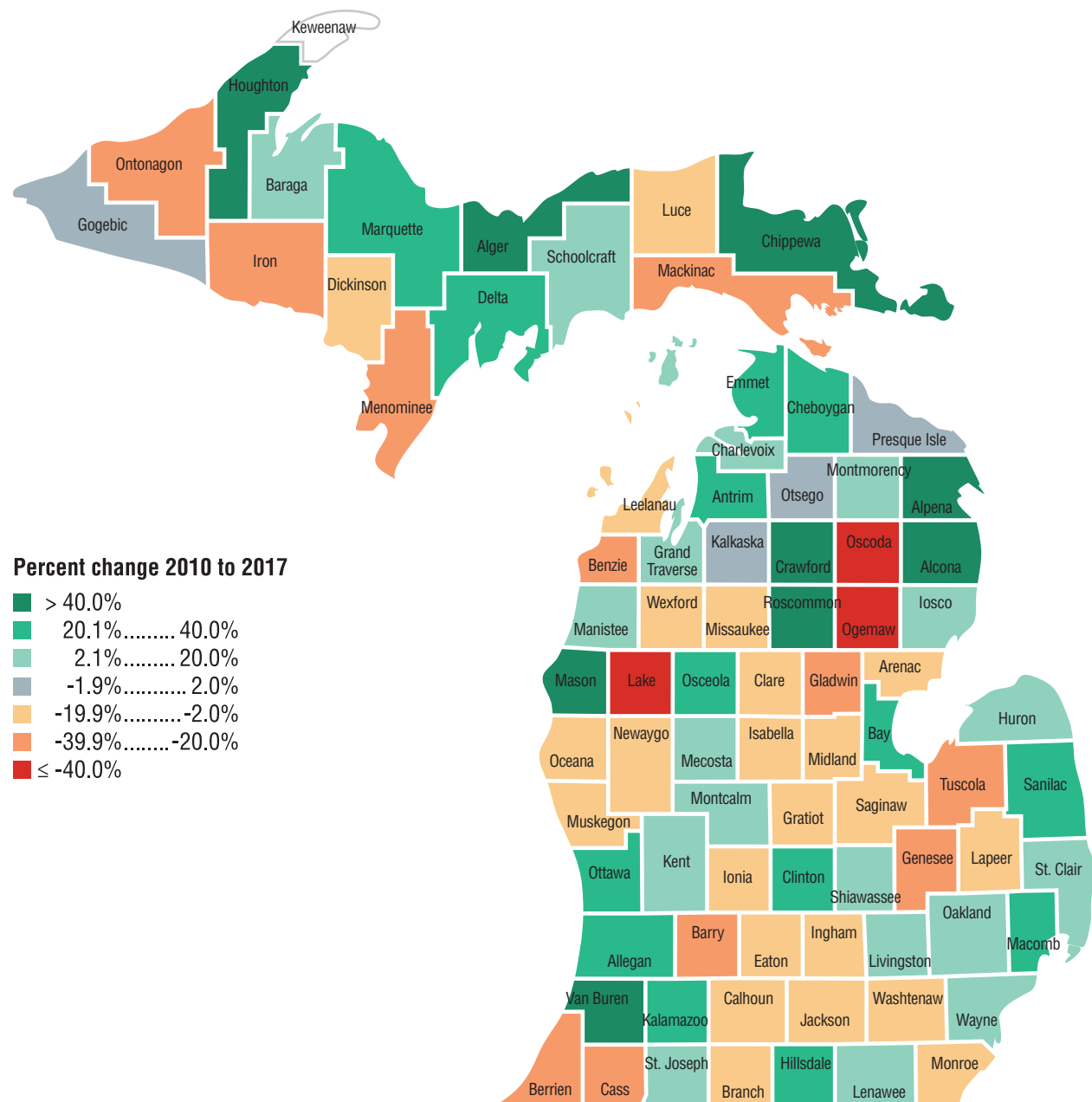
Fortunately, the change in the total number of child care slots available has not decreased so dramatically (see Exhibit 4). From 2010 to 2017, the total number of slots declined by 2.5 percent, a loss of 9,152 slots. The distribution of this change is not uniform across the state. Some counties experienced a significant loss in total slots (Benzie, Lake, Ogemaw, and Oscoda Counties), while others have experienced a significant increase (Alcona, Alger, Chippewa, Houghton, and Keweenaw Counties).

**Exhibit 4.** Change in the Number of Slots for Children of Any Age, 2010–2017



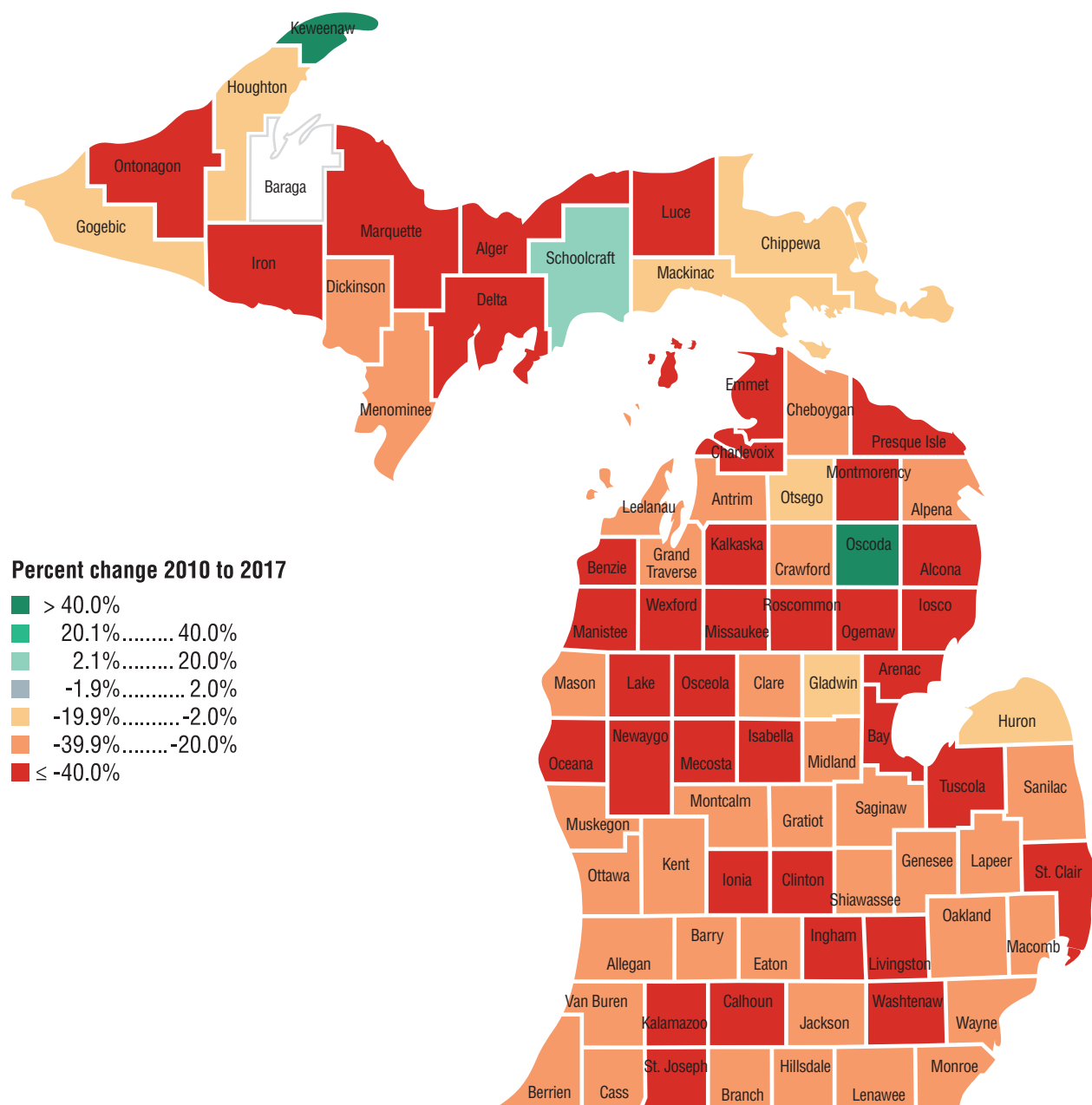
The decline in total slots available is offset by the marked increase in total center slots. Overall, the number of childcare slots at centers in Michigan increased 5.3 percent from 2010 to 2017. However, this growth has not been uniform: Some counties experienced a significant decline, while a neighboring county experienced a significant increase in the total number of slots. (see Exhibit 5).

**Exhibit 5.** Change in the Number of Slots at Centers for Children of Any Age, 2010–2017



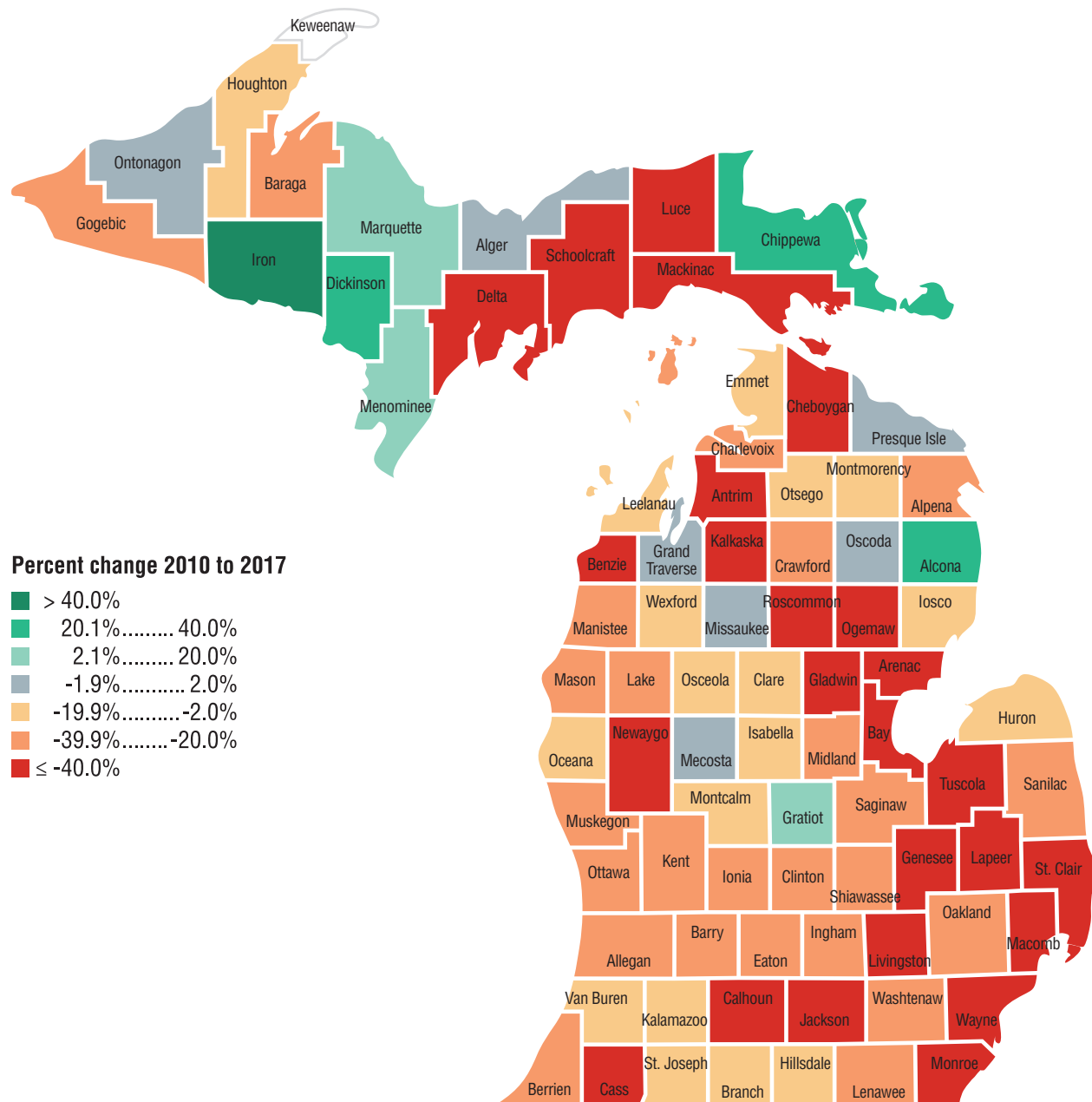
The change in the number of slots at family homes between 2010 and 2017 is relatively consistent. With a few exceptions, nearly all communities have lost these slots (see Exhibit 6). Overall, the state has lost nearly 40 percent of child care slots at family homes.

**Exhibit 6.** Change in the Number of Slots at Family Homes for Children of Any Age, 2010–2017



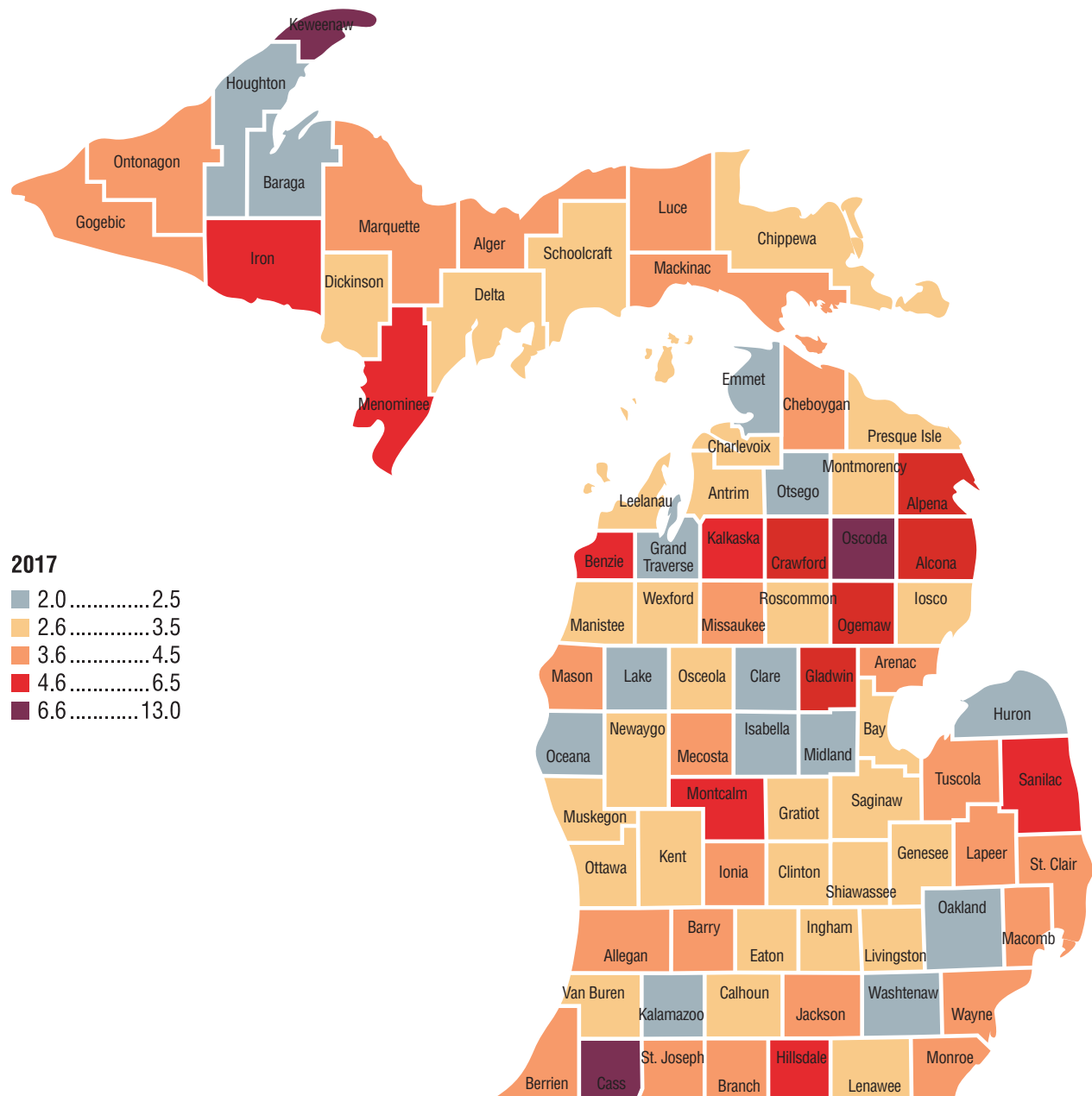
Similar to the decline in child care slots at family homes, there has been a marked drop in the number of slots at group homes. Overall, the state has lost over 34 percent of child care slots at these homes. The notable exceptions are several rural counties that, while experiencing significant percentage increases, did not increase the total number of slots in a given county by more than 36.

**Exhibit 7.** Change in the Number of Slots at Group Homes for Children of Any Age, 2010–2017



While not all children aged zero to nine need child care, examining the number of children compared to the number of total slots may highlight where significant capacity gaps exist. For example, Keweenaw County has 13 children aged zero to nine for every licensed child care slot in the county; in 2017, there were only 12 licensed slots. Oscoda County had one slot for every nine children aged zero to nine, while Baraga, Emmet, and Washtenaw Counties had one slot for every two children.

**Exhibit 8.** Number of Children Age Zero to Nine for Every Child Care Slot, 2017





## Final Observations

---

The ability to access quality child care is a critical issue facing families in Michigan. Michigan has a strong child care system with a variety of care options for families, and the state has made significant progress in improving quality across providers. However, the decline in providers and licensed slots in some communities is a significant challenge for the system and for many families. The data show that statewide, the percentage of child care slots has declined by less than that of the population of children aged zero to nine (5.5 percent decline compared to a 2.5 percent decline). However, this change varies widely by county, and in some communities the decline in licensed slots is significantly larger than the decline in the population of children. Continued research on the availability of care is needed.

The data also show that the choices available to families have changed significantly. From 2010 to 2017, the number of family and group home providers declined dramatically (38.8 percent and 34.1 percent, respectively), while the number of child care centers increased by 5.3 percent. Additional research is required to further investigate the driving factors of the shift from group home– and family-based child care to center-based care. Because centers tend to serve more children, this shift has mitigated the state’s decline in overall number of slots. The loss of home-based providers, however, changes the child care landscape for families. These providers, for example, are significantly more likely to provide care outside of traditional hours (on evenings and weekends). On average, home-based providers are also less expensive than centers (Michigan Department of Education 2018).

Across the child care system, there is a prevailing challenge to document the availability of infant and toddler care. This availability is difficult to quantify, because the number of total slots available by a provider does not indicate how many slots are filled by each age group. Also, providers who are licensed for infants and toddlers may not be accepting children under 30 months. In fact, ten communities do not even have licensed options for children under 30 months. An examination of how many slots are allocated to infant and toddler care would allow for a more thorough analysis.

To support continued analysis of these questions, this report is supplemented by 83 county-level handouts as well as the complete data set used to conduct this analysis.



# Michigan

## Key Findings:

- The total number of licensed providers has declined approximately 24 percent since 2010, while the total number of slots has declined 2.5 percent.
- The number of child care center slots serving children has increased 5.3 percent since 2010, while the number of family child care home and group child care home slots have decreased 38.8 percent and 34.2 percent, respectively.
- There are 6,956 providers who will serve infants and toddlers in Michigan, compared to 9,797 providers who serve children age zero to 12.

## Exhibit 9. Statewide Data

### Children

Category	2010	2017	Number Change	Percent Change
0 to 9	1,228,338	1,161,251	-67,087	-5.5%

### Licensed Providers

Category	2010	2017	Number Change	Percent Change
All Providers	12,862	9,797	-3,065	-23.8%
Child Care Centers	4,163	4,363	200	4.8%
Family Child Care Homes	5,888	3,585	-2,303	-39.1%
Group Child Care Homes	2,811	1,849	-962	-34.2%

### Slots

Category	2010	2017	Number Change	Percent Change
Total Slots	366,362	357,210	-9,152	-2.5%
Child Care Centers	297,834	313,692	15,858	5.3%
Family Child Care Homes	34,949	21,397	-13,552	-38.8%
Group Child Care Homes	33,579	22,121	-11,458	-34.1%

### Slots at Providers Serving Infants and Toddlers (Age < 30 Months)\*

Category	2010	2017	Number Change	Percent Change
All Providers	187,904	177,713	-10,191	-5.4%
Child Care Centers	119,805	134,513	14,708	12.3%
Family Child Care Homes	34,683	21,206	-13,477	-38.9%
Group Child Care Homes	33,416	21,994	-11,422	-34.2%

\*Note: This table indicates the total number of slots at licensed providers who offer service to infants and toddlers. The state does not collect data on the number of slots by age group, so PSC is unable to differentiate between infant and toddler slots and other child care slots.

## References

---

- Great Start to Quality. 2018. "[Great Start to Quality Participation Data](https://greatstarttoquality.org/great-start-quality-participation-data)." *About*. Accessed November 19, 2018. <https://greatstarttoquality.org/great-start-quality-participation-data>
- Michigan Department of Education. 2018. [Child Care Market Rate Study](https://www.michigan.gov/documents/mde/MRS_Final_Rpt_620152_7.pdf). Lansing: Public Policy Associates, Incorporated. Accessed September 2018. [https://www.michigan.gov/documents/mde/MRS\\_Final\\_Rpt\\_620152\\_7.pdf](https://www.michigan.gov/documents/mde/MRS_Final_Rpt_620152_7.pdf).
- Michigan Department of Licensing and Regulatory Affairs (LARA). June 3, 2009. [Licensing Rules for Family and Group Child Care Homes](https://www.michigan.gov/documents/lara/lara_BCAL_PUB-724_0715_494800_7.pdf). Accessed November 28, 2018. [https://www.michigan.gov/documents/lara/lara\\_BCAL\\_PUB-724\\_0715\\_494800\\_7.pdf](https://www.michigan.gov/documents/lara/lara_BCAL_PUB-724_0715_494800_7.pdf)
- Michigan Department of Licensing and Regulatory Affairs. January 2, 2014. [Licensing Rules for Child Care Centers](https://www.michigan.gov/documents/lara/BCAL_PUB_8_3_16_523999_7.pdf). Accessed September 14, 2018. [https://www.michigan.gov/documents/lara/BCAL\\_PUB\\_8\\_3\\_16\\_523999\\_7.pdf](https://www.michigan.gov/documents/lara/BCAL_PUB_8_3_16_523999_7.pdf)
- U.S. Census Bureau. 2018. "[Annual Estimates of the Resident Population for Selected Age Groups by Sex for the United States, States, Counties, and Puerto Rico Commonwealth and Municipios: April 1, 2010 to July 1, 2017. 2017 Population Estimates. Table PEPAGESEX](https://factfinder.census.gov/faces/tableservices/jsf/pages/productview.xhtml?pid=PEP_2017_PEPAGESEX&prodType=table)." *American Fact Finder*. Accessed September 2018. [https://factfinder.census.gov/faces/tableservices/jsf/pages/productview.xhtml?pid=PEP\\_2017\\_PEPAGESEX&prodType=table](https://factfinder.census.gov/faces/tableservices/jsf/pages/productview.xhtml?pid=PEP_2017_PEPAGESEX&prodType=table)



# Appendix

**Exhibit 10.** Number of Children Age Zero to Nine and Providers Serving Children Less than 30 Months

County	Number of Children Age 0-9, 2010	Number of Children Age 0-9, 2017	Change in number of children age 0-9	Percent change in number of children 0-9	Total providers serving children less than 30 months, 2010	Total providers serving children less than 30 months, 2017	Change in providers serving children less than 30 months	Percent change in providers serving children less than 30 months
Alcona	718	653	-65	-9.1%	8	7	-1	-12.5%
Alger	826	686	-140	-16.9%	7	5	-2	-28.6%
Allegan	15,453	15,099	-354	-2.3%	157	104	-53	-33.8%
Alpena	3,149	2,812	-337	-10.7%	49	36	-13	-26.5%
Antrim	2,514	2,149	-365	-14.5%	27	17	-10	-37.0%
Arenac	1,567	1,400	-167	-10.7%	18	10	-8	-44.4%
Baraga	874	771	-103	-11.8%	3	3	0	0.0%
Barry	7,443	6,953	-490	-6.6%	79	53	-26	-32.9%
Bay	12,714	10,965	-1,749	-13.8%	139	83	-56	-40.3%
Benzie	1,947	1,668	-279	-14.3%	36	12	-24	-66.7%
Berrien	19,524	18,320	-1,204	-6.2%	179	118	-61	-34.1%
Branch	5,884	5,377	-507	-8.6%	66	53	-13	-19.7%
Calhoun	17,716	16,796	-920	-5.2%	203	108	-95	-46.8%
Cass	6,270	5,515	-755	-12.0%	61	33	-28	-45.9%
Charlevoix	2,884	2,492	-392	-13.6%	50	25	-25	-50.0%
Cheboygan	2,634	2,089	-545	-20.7%	42	23	-19	-45.2%
Chippewa	4,094	3,674	-420	-10.3%	45	44	-1	-2.2%
Clare	3,403	3,279	-124	-3.6%	33	26	-7	-21.2%
Clinton	9,546	9,090	-456	-4.8%	140	80	-60	-42.9%
Crawford	1,399	1,297	-102	-7.3%	16	12	-4	-25.0%
Delta	4,094	3,787	-307	-7.5%	50	30	-20	-40.0%
Dickinson	2,769	2,690	-79	-2.9%	31	26	-5	-16.1%
Eaton	12,705	12,138	-567	-4.5%	188	134	-54	-28.7%
Emmet	3,689	3,337	-352	-9.5%	33	28	-5	-15.2%
Genesee	56,027	49,244	-6,783	-12.1%	387	247	-140	-36.2%
Gladwin	2,600	2,522	-78	-3.0%	21	16	-5	-23.8%
Gogebic	1,451	1,292	-159	-11.0%	13	12	-1	-7.7%
Grand Traverse	10,182	9,989	-193	-1.9%	177	130	-47	-26.6%
Gratiot	4,788	4,232	-556	-11.6%	91	74	-17	-18.7%

County	Number of Children Age 0-9, 2010	Number of Children Age 0-9, 2017	Change in number of children age 0-9	Percent change in number of children age 0-9	Total providers serving children less than 30 months, 2010	Total providers serving children less than 30 months, 2017	Change in providers serving children less than 30 months	Percent change in providers serving children less than 30 months
Hillsdale	5,807	5,246	-561	-9.7%	58	44	-14	-24.1%
Houghton	4,264	3,885	-379	-8.9%	40	34	-6	-15.0%
Huron	3,402	3,173	-229	-6.7%	40	39	-1	-2.5%
Ingham	32,128	32,063	-65	-0.2%	366	233	-133	-36.3%
Ionia	8,391	7,678	-713	-8.5%	108	68	-40	-37.0%
Iosco	2,206	2,234	28	1.3%	23	17	-6	-26.1%
Iron	1,020	960	-60	-5.9%	9	6	-3	-33.3%
Isabella	7,107	6,621	-486	-6.8%	88	65	-23	-26.1%
Jackson	19,537	18,369	-1,168	-6.0%	199	121	-78	-39.2%
Kalamazoo	31,321	31,689	368	1.2%	337	241	-96	-28.5%
Kalkaska	2,069	1,954	-115	-5.6%	26	14	-12	-46.2%
Kent	87,277	87,680	403	0.5%	948	626	-322	-34.0%
Keweenaw	214	157	-57	-26.6%	1	2	1	100.0%
Lake	1,047	1,057	10	1.0%	8	5	-3	-37.5%
Lapeer	10,329	9,165	-1,164	-11.3%	70	44	-26	-37.1%
Leelanau	2,023	1,842	-181	-8.9%	26	20	-6	-23.1%
Lenawee	11,840	10,871	-969	-8.2%	133	89	-44	-33.1%
Livingston	22,468	20,228	-2,240	-10.0%	145	98	-47	-32.4%
Luce	628	542	-86	-13.7%	11	5	-6	-54.5%
Mackinac	1,016	820	-196	-19.3%	18	13	-5	-27.8%
Macomb	101,181	97,410	-3,771	-3.7%	519	364	-155	-29.9%
Manistee	2,434	2,082	-352	-14.5%	30	20	-10	-33.3%
Marquette	6,779	6,618	-161	-2.4%	67	44	-23	-34.3%
Mason	3,234	3,145	-89	-2.8%	67	44	-23	-34.3%
Mecosta	4,579	4,253	-326	-7.1%	50	30	-20	-40.0%
Menominee	2,524	2,117	-407	-16.1%	24	18	-6	-25.0%
Midland	10,094	9,263	-831	-8.2%	134	100	-34	-25.4%
Missaukee	1,841	1,886	45	2.4%	29	17	-12	-41.4%
Monroe	18,475	16,559	-1,916	-10.4%	128	83	-45	-35.2%
Montcalm	7,940	7,629	-311	-3.9%	72	56	-16	-22.2%
Montmorency	814	709	-105	-12.9%	11	7	-4	-36.4%
Muskegon	22,879	21,846	-1,033	-4.5%	271	188	-83	-30.6%

County	Number of Children Age 0-9, 2010	Number of Children Age 0-9, 2017	Change in number of children age 0-9	Percent change in number of children age 0-9	Total providers serving children less than 30 months, 2010	Total providers serving children less than 30 months, 2017	Change in providers serving children less than 30 months	Percent change in providers serving children less than 30 months
Newaygo	6,181	5,695	-486	-7.9%	69	32	-37	-53.6%
Oakland	145,006	138,879	-6,127	-4.2%	885	648	-237	-26.8%
Oceana	3,535	3,237	-298	-8.4%	45	31	-14	-31.1%
Ogemaw	2,191	2,003	-188	-8.6%	32	16	-16	-50.0%
Ontonagon	498	336	-162	-32.5%	4	3	-1	-25.0%
Osceola	3,048	2,662	-386	-12.7%	28	19	-9	-32.1%
Oscoda	885	882	-3	-0.3%	3	4	1	33.3%
Otsego	2,907	2,823	-84	-2.9%	53	46	-7	-13.2%
Ottawa	36,829	37,347	518	1.4%	431	306	-125	-29.0%
Presque Isle	1,150	1,025	-125	-10.9%	16	10	-6	-37.5%
Roscommon	1,994	1,838	-156	-7.8%	23	12	-11	-47.8%
Saginaw	24,458	21,963	-2,495	-10.2%	287	199	-88	-30.7%
St Clair	19,513	16,937	-2,576	-13.2%	43	31	-12	-27.9%
St Joseph	8,638	8,112	-526	-6.1%	9	9	0	0.0%
Sanilac	5,247	4,665	-582	-11.1%	66	50	-16	-24.2%
Schoolcraft	830	701	-129	-15.5%	133	67	-66	-49.6%
Shiawassee	8,541	7,423	-1,118	-13.1%	100	69	-31	-31.0%
Tuscola	6,539	5,573	-966	-14.8%	69	35	-34	-49.3%
Van Buren	10,068	9,466	-602	-6.0%	100	78	-22	-22.0%
Washtenaw	39,071	36,685	-2,386	-6.1%	409	257	-152	-37.2%
Wayne	241,073	228,663	-12,410	-5.1%	880	689	-191	-21.7%
Wexford	4,404	4,269	-135	-3.1%	59	41	-18	-30.5%
Statewide	1,228,338	1,161,251	-67,087	-5.5%	10,149	6,956	-3,193	-31.5%



**Exhibit 11.** Total Number of Providers and Center Child Care Providers

County	Total providers, 2010	Total providers, 2017	Change in total providers	Percent change in total providers	Total center providers, 2010	Total center providers, 2017	Change in total center providers	Percent change in total center providers
Alcona	9	10	1	11.1%	1	3	2	200.0%
Alger	9	9	0	0.0%	2	5	3	150.0%
Allegan	197	159	-38	-19.3%	50	63	13	26.0%
Alpena	56	46	-10	-17.9%	7	10	3	42.9%
Antrim	35	25	-10	-28.6%	10	11	1	10.0%
Arenac	23	17	-6	-26.1%	8	9	1	12.5%
Baraga	6	5	-1	-16.7%	3	3	0	0.0%
Barry	93	68	-25	-26.9%	25	23	-2	-8.0%
Bay	166	118	-48	-28.9%	46	53	7	15.2%
Benzie	45	18	-27	-60.0%	12	8	-4	-33.3%
Berrien	220	152	-68	-30.9%	62	53	-9	-14.5%
Branch	84	69	-15	-17.9%	22	18	-4	-18.2%
Calhoun	241	147	-94	-39.0%	58	60	2	3.4%
Cass	67	40	-27	-40.3%	11	10	-1	-9.1%
Charlevoix	63	39	-24	-38.1%	14	14	0	0.0%
Cheboygan	51	33	-18	-35.3%	10	11	1	10.0%
Chippewa	56	61	5	8.9%	13	21	8	61.5%
Clare	47	40	-7	-14.9%	18	17	-1	-5.6%
Clinton	155	103	-52	-33.5%	27	35	8	29.6%
Crawford	19	15	-4	-21.1%	3	4	1	33.3%
Delta	58	46	-12	-20.7%	17	25	8	47.1%
Dickinson	44	36	-8	-18.2%	17	14	-3	-17.6%
Eaton	224	165	-59	-26.3%	53	49	-4	-7.5%
Emmet	48	43	-5	-10.4%	20	24	4	20.0%
Genesee	504	346	-158	-31.3%	221	189	-32	-14.5%
Gladwin	31	24	-7	-22.6%	11	10	-1	-9.1%
Gogebic	16	14	-2	-12.5%	5	5	0	0.0%
Grand Traverse	205	169	-36	-17.6%	44	58	14	31.8%
Gratiot	105	86	-19	-18.1%	17	14	-3	-17.6%
Hillsdale	74	62	-12	-16.2%	23	22	-1	-4.3%
Houghton	47	44	-3	-6.4%	12	16	4	33.3%
Huron	52	54	2	3.8%	20	25	5	25.0%

County	Total providers, 2010	Total providers, 2017	Change in total providers	Percent change in total providers	Total center providers, 2010	Total center providers, 2017	Change in total center providers	Percent change in total center providers
Ingham	459	321	-138	-30.1%	145	139	-6	-4.1%
Ionia	124	89	-35	-28.2%	25	30	5	20.0%
Iosco	33	27	-6	-18.2%	11	12	1	9.1%
Iron	13	9	-4	-30.8%	5	4	-1	-20.0%
Isabella	117	88	-29	-24.8%	34	29	-5	-14.7%
Jackson	243	161	-82	-33.7%	60	56	-4	-6.7%
Kalamazoo	423	344	-79	-18.7%	123	150	27	22.0%
Kalkaska	33	19	-14	-42.4%	8	7	-1	-12.5%
Kent	1,156	864	-292	-25.3%	284	315	31	10.9%
Keweenaw	1	2	1	100.0%	0	0	0	N/A
Lake	13	8	-5	-38.5%	5	3	-2	-40.0%
Lapeer	93	61	-32	-34.4%	38	28	-10	-26.3%
Leelanau	37	28	-9	-24.3%	14	12	-2	-14.3%
Lenawee	164	126	-38	-23.2%	48	54	6	12.5%
Livingston	193	142	-51	-26.4%	86	82	-4	-4.7%
Luce	13	6	-7	-53.8%	3	3	0	0.0%
Mackinac	22	17	-5	-22.7%	5	5	0	0.0%
Macomb	649	521	-128	-19.7%	196	248	52	26.5%
Manistee	36	27	-9	-25.0%	10	11	1	10.0%
Marquette	85	66	-19	-22.4%	25	29	4	16.0%
Mason	72	50	-22	-30.6%	8	9	1	12.5%
Mecosta	67	42	-25	-37.3%	23	19	-4	-17.4%
Menominee	31	24	-7	-22.6%	10	8	-2	-20.0%
Midland	181	132	-49	-27.1%	56	47	-9	-16.1%
Missaukee	35	21	-14	-40.0%	8	7	-1	-12.5%
Monroe	174	127	-47	-27.0%	71	64	-7	-9.9%
Montcalm	91	78	-13	-14.3%	25	23	-2	-8.0%
Montmorency	16	13	-3	-18.8%	6	6	0	0.0%
Muskegon	325	236	-89	-27.4%	80	70	-10	-12.5%
Newaygo	83	42	-41	-49.4%	21	17	-4	-19.0%



County	Total providers, 2010	Total providers, 2017	Change in total providers	Percent change in total providers	Total center providers, 2010	Total center providers, 2017	Change in total center providers	Percent change in total center providers
Oakland	1,153	956	-197	-17.1%	503	555	52	10.3%
Oceana	60	43	-17	-28.3%	21	17	-4	-19.0%
Ogemaw	36	21	-15	-41.7%	7	6	-1	-14.3%
Ontonagon	9	5	-4	-44.4%	5	2	-3	-60.0%
Osceola	39	29	-10	-25.6%	13	13	0	0.0%
Oscoda	5	7	2	40.0%	3	3	0	0.0%
Otsego	60	53	-7	-11.7%	10	10	0	0.0%
Ottawa	492	382	-110	-22.4%	98	116	18	18.4%
Presque Isle	23	17	-6	-26.1%	7	7	0	0.0%
Roscommon	31	20	-11	-35.5%	11	13	2	18.2%
Saginaw	371	252	-119	-32.1%	123	91	-32	-26.0%
St Clair	176	127	-49	-27.8%	58	76	18	31.0%
St Joseph	114	86	-28	-24.6%	26	25	-1	-3.8%
Sanilac	55	46	-9	-16.4%	14	18	4	28.6%
Schoolcraft	13	12	-1	-7.7%	4	3	-1	-25.0%
Shiawassee	82	65	-17	-20.7%	25	25	0	0.0%
Tuscola	85	51	-34	-40.0%	27	23	-4	-14.8%
Van Buren	120	106	-14	-11.7%	31	43	12	38.7%
Washtenaw	514	370	-144	-28.0%	195	194	-1	-0.5%
Wayne	1,316	1,140	-176	-13.4%	670	736	66	9.9%
Wexford	76	55	-21	-27.6%	17	18	1	5.9%
Statewide	12,862	9,797	-3,065	-23.8%	4,163	4,363	200	4.8%



**Exhibit 12. Family and Group Home Child Care Providers**

County	Total family providers, 2010	Total family providers, 2017	Change in total family providers	Percent change in total family providers	Total group home providers, 2010	Total group home providers, 2017	Change in total group home providers	Percent change in total group home providers
Alcona	5	3	-2	-40.0%	3	4	1	33.3%
Alger	6	3	-3	-50.0%	1	1	0	0.0%
Allegan	110	71	-39	-35.5%	37	25	-12	-32.4%
Alpena	35	25	-10	-28.6%	14	11	-3	-21.4%
Antrim	15	11	-4	-26.7%	10	3	-7	-70.0%
Arenac	8	4	-4	-50.0%	7	4	-3	-42.9%
Baraga	0	0	0	N/A	3	2	-1	-33.3%
Barry	45	27	-18	-40.0%	23	18	-5	-21.7%
Bay	69	35	-34	-49.3%	51	30	-21	-41.2%
Benzie	27	8	-19	-70.4%	6	2	-4	-66.7%
Berrien	98	59	-39	-39.8%	60	40	-20	-33.3%
Branch	45	37	-8	-17.8%	17	14	-3	-17.6%
Calhoun	132	63	-69	-52.3%	51	24	-27	-52.9%
Cass	32	19	-13	-40.6%	24	11	-13	-54.2%
Charlevoix	28	12	-16	-57.1%	21	13	-8	-38.1%
Cheboygan	25	17	-8	-32.0%	16	5	-11	-68.8%
Chippewa	32	26	-6	-18.8%	11	14	3	27.3%
Clare	14	9	-5	-35.7%	15	14	-1	-6.7%
Clinton	87	39	-48	-55.2%	41	29	-12	-29.3%
Crawford	13	9	-4	-30.8%	3	2	-1	-33.3%
Delta	37	19	-18	-48.6%	4	2	-2	-50.0%
Dickinson	22	15	-7	-31.8%	5	7	2	40.0%
Eaton	121	79	-42	-34.7%	50	37	-13	-26.0%
Emmet	18	10	-8	-44.4%	10	9	-1	-10.0%
Genesee	139	88	-51	-36.7%	144	69	-75	-52.1%
Gladwin	9	8	-1	-11.1%	11	6	-5	-45.5%
Gogebic	8	7	-1	-12.5%	3	2	-1	-33.3%
Grand Traverse	135	85	-50	-37.0%	26	26	0	0.0%
Gratiot	58	39	-19	-32.8%	30	33	3	10.0%
Hillsdale	30	21	-9	-30.0%	21	19	-2	-9.5%
Houghton	27	21	-6	-22.2%	8	7	-1	-12.5%
Huron	21	20	-1	-4.8%	11	9	-2	-18.2%

County	Total family providers, 2010	Total family providers, 2017	Change in total family providers	Percent change in total family providers	Total group home providers, 2010	Total group home providers, 2017	Change in total group home providers	Percent change in total group home providers
Ingham	203	107	-96	-47.3%	111	75	-36	-32.4%
Ionia	68	39	-29	-42.6%	31	20	-11	-35.5%
Iosco	7	3	-4	-57.1%	15	12	-3	-20.0%
Iron	7	3	-4	-57.1%	1	2	1	100.0%
Isabella	49	29	-20	-40.8%	34	30	-4	-11.8%
Jackson	102	65	-37	-36.3%	81	40	-41	-50.6%
Kalamazoo	231	131	-100	-43.3%	69	63	-6	-8.7%
Kalkaska	18	8	-10	-55.6%	7	4	-3	-42.9%
Kent	727	462	-265	-36.5%	145	87	-58	-40.0%
Keweenaw	1	2	1	100.0%	0	0	0	N/A
Lake	4	2	-2	-50.0%	4	3	-1	-25.0%
Lapeer	22	15	-7	-31.8%	33	18	-15	-45.5%
Leelanau	17	11	-6	-35.3%	6	5	-1	-16.7%
Lenawee	60	36	-24	-40.0%	56	36	-20	-35.7%
Livingston	79	47	-32	-40.5%	28	13	-15	-53.6%
Luce	8	2	-6	-75.0%	2	1	-1	-50.0%
Mackinac	11	9	-2	-18.2%	6	3	-3	-50.0%
Macomb	327	199	-128	-39.1%	126	74	-52	-41.3%
Manistee	16	9	-7	-43.8%	10	7	-3	-30.0%
Marquette	49	25	-24	-49.0%	11	12	1	9.1%
Mason	39	24	-15	-38.5%	25	17	-8	-32.0%
Mecosta	29	8	-21	-72.4%	15	15	0	0.0%
Menominee	16	10	-6	-37.5%	5	6	1	20.0%
Midland	79	51	-28	-35.4%	46	34	-12	-26.1%
Missaukee	18	5	-13	-72.2%	9	9	0	0.0%
Monroe	61	39	-22	-36.1%	42	24	-18	-42.9%
Montcalm	37	29	-8	-21.6%	29	26	-3	-10.3%
Montmorency	4	2	-2	-50.0%	6	5	-1	-16.7%
Muskegon	153	96	-57	-37.3%	92	70	-22	-23.9%
Newaygo	42	17	-25	-59.5%	20	8	-12	-60.0%

County	Total family providers, 2010	Total family providers, 2017	Change in total family providers	Percent change in total family providers	Total group home providers, 2010	Total group home providers, 2017	Change in total group home providers	Percent change in total group home providers
Oakland	380	238	-142	-37.4%	270	163	-107	-39.6%
Oceana	20	11	-9	-45.0%	19	15	-4	-21.1%
Ogemaw	17	9	-8	-47.1%	12	6	-6	-50.0%
Ontonagon	1	0	-1	-100.0%	3	3	0	0.0%
Osceola	12	4	-8	-66.7%	14	12	-2	-14.3%
Oscoda	1	3	2	200.0%	1	1	0	0.0%
Otsego	27	24	-3	-11.1%	23	19	-4	-17.4%
Ottawa	352	235	-117	-33.2%	42	31	-11	-26.2%
Presque Isle	13	7	-6	-46.2%	3	3	0	0.0%
Roscommon	11	3	-8	-72.7%	9	4	-5	-55.6%
Saginaw	158	106	-52	-32.9%	90	55	-35	-38.9%
St Clair	72	31	-41	-56.9%	46	20	-26	-56.5%
St Joseph	52	31	-21	-40.4%	36	30	-6	-16.7%
Sanilac	20	14	-6	-30.0%	21	14	-7	-33.3%
Schoolcraft	7	8	1	14.3%	2	1	-1	-50.0%
Shiawassee	42	30	-12	-28.6%	15	10	-5	-33.3%
Tuscola	32	15	-17	-53.1%	26	13	-13	-50.0%
Van Buren	63	41	-22	-34.9%	26	22	-4	-15.4%
Washtenaw	212	107	-105	-49.5%	107	69	-38	-35.5%
Wayne	424	275	-149	-35.1%	222	129	-93	-41.9%
Wexford	37	19	-18	-48.6%	22	18	-4	-18.2%
Statewide	5,888	3,585	-2,303	-39.1%	2,811	1,849	-962	-34.2%



**Exhibit 13.** Total Number of Slots and Center Child Care Slots

County	Total slots, 2010	Total slots, 2017	Change in total slots	Percent change in total slots	Total center slots, 2010	Total center slots, 2017	Change in total center slots	Percent change in total center slots
Alcona	78	116	38	48.7%	12	50	38	316.7%
Alger	121	172	51	42.1%	73	142	69	94.5%
Allegan	3,520	3,717	197	5.6%	2,422	2,997	575	23.7%
Alpena	561	584	23	4.1%	183	302	119	65.0%
Antrim	782	822	40	5.1%	572	720	148	25.9%
Arenac	438	356	-82	-18.7%	306	284	-22	-7.2%
Baraga	366	383	17	4.6%	330	359	29	8.8%
Barry	2,483	1,590	-893	-36.0%	1,939	1,212	-727	-37.5%
Bay	3,419	3,456	37	1.1%	2,402	2,887	485	20.2%
Benzie	636	328	-308	-48.4%	402	258	-144	-35.8%
Berrien	5,677	3,997	-1,680	-29.6%	4,382	3,163	-1,219	-27.8%
Branch	1,515	1,247	-268	-17.7%	1,041	857	-184	-17.7%
Calhoun	6,817	5,707	-1,110	-16.3%	5,416	5,043	-373	-6.9%
Cass	1,019	607	-412	-40.4%	543	361	-182	-33.5%
Charlevoix	1,049	942	-107	-10.2%	629	714	85	13.5%
Cheboygan	595	504	-91	-15.3%	256	342	86	33.6%
Chippewa	696	1,035	339	48.7%	373	711	338	90.6%
Clare	1,367	1,298	-69	-5.0%	1,103	1,078	-25	-2.3%
Clinton	2,842	2,989	147	5.2%	1,837	2,407	570	31.0%
Crawford	208	211	3	1.4%	94	133	39	41.5%
Delta	1,049	1,194	145	13.8%	782	1,056	274	35.0%
Dickinson	1,029	904	-125	-12.1%	837	730	-107	-12.8%
Eaton	5,199	4,462	-737	-14.2%	3,879	3,544	-335	-8.6%
Emmet	1,225	1,522	297	24.2%	999	1,354	355	35.5%
Genesee	25,619	16,116	-9,503	-37.1%	23,070	14,764	-8,306	-36.0%
Gladwin	876	536	-340	-38.8%	690	416	-274	-39.7%
Gogebic	309	295	-14	-4.5%	225	229	4	1.8%
Grand Traverse	4,199	4,355	156	3.7%	3,081	3,533	452	14.7%
Gratiot	1,315	1,177	-138	-10.5%	609	549	-60	-9.9%
Hillsdale	1,035	1,124	89	8.6%	603	770	167	27.7%
Houghton	937	1,514	577	61.6%	679	1,304	625	92.0%
Huron	1,235	1,358	123	10.0%	977	1,130	153	15.7%

County	Total slots, 2010	Total slots, 2017	Change in total slots	Percent change in total slots	Total center slots, 2010	Total center slots, 2017	Change in total center slots	Percent change in total center slots
Ingham	12,460	11,141	-1,319	-10.6%	9,924	9,600	-324	-3.3%
Ionia	2,111	1,769	-342	-16.2%	1,334	1,298	-36	-2.7%
Iosco	633	624	-9	-1.4%	416	464	48	11.5%
Iron	250	178	-72	-28.8%	196	136	-60	-30.6%
Isabella	3,071	2,665	-406	-13.2%	2,369	2,131	-238	-10.0%
Jackson	5,439	4,418	-1,021	-18.8%	3,857	3,548	-309	-8.0%
Kalamazoo	10,839	12,584	1,745	16.1%	8,643	11,043	2,400	27.8%
Kalkaska	523	428	-95	-18.2%	334	332	-2	-0.6%
Kent	30,599	32,077	1,478	4.8%	24,548	28,286	3,738	15.2%
Keweenaw	6	12	6	100.0%	0	0	0	N/A
Lake	832	420	-412	-49.5%	760	372	-388	-51.1%
Lapeer	2,534	1,990	-544	-21.5%	2,014	1,688	-326	-16.2%
Leelanau	817	675	-142	-17.4%	643	549	-94	-14.6%
Lenawee	3,835	3,933	98	2.6%	2,811	3,285	474	16.9%
Livingston	6,723	7,181	458	6.8%	5,916	6,745	829	14.0%
Luce	185	127	-58	-31.4%	113	108	-5	-4.4%
Mackinac	318	214	-104	-32.7%	184	124	-60	-32.6%
Macomb	18,896	22,658	3,762	19.9%	15,460	20,578	5,118	33.1%
Manistee	608	597	-11	-1.8%	392	459	67	17.1%
Marquette	1,575	1,688	113	7.2%	1,155	1,394	239	20.7%
Mason	855	813	-42	-4.9%	322	466	144	44.7%
Mecosta	1,189	1,103	-86	-7.2%	835	875	40	4.8%
Menominee	506	369	-137	-27.1%	350	237	-113	-32.3%
Midland	4,456	3,948	-508	-11.4%	3,435	3,234	-201	-5.9%
Missaukee	545	435	-110	-20.2%	329	297	-32	-9.7%
Monroe	5,101	4,051	-1,050	-20.6%	4,241	3,535	-706	-16.6%
Montcalm	1,623	1,587	-36	-2.2%	1,053	1,103	50	4.7%
Montmorency	219	211	-8	-3.7%	123	139	16	13.0%
Muskegon	7,712	6,505	-1,207	-15.7%	5,698	5,094	-604	-10.6%
Newaygo	2,398	1,798	-600	-25.0%	1,909	1,600	-309	-16.2%

County	Total slots, 2010	Total slots, 2017	Change in total slots	Percent change in total slots	Total center slots, 2010	Total center slots, 2017	Change in total center slots	Percent change in total center slots
Oakland	48,756	54,168	5,412	11.1%	43,270	50,798	7,528	17.4%
Oceana	1,704	1,402	-302	-17.7%	1,361	1,156	-205	-15.1%
Ogemaw	773	351	-422	-54.6%	527	225	-302	-57.3%
Ontonagon	130	91	-39	-30.0%	88	55	-33	-37.5%
Osceola	712	777	65	9.1%	476	612	136	28.6%
Oscoda	238	90	-148	-62.2%	220	60	-160	-72.7%
Otsego	1,167	1,104	-63	-5.4%	729	733	4	0.5%
Ottawa	9,628	10,724	1,096	11.4%	7,019	8,947	1,928	27.5%
Presque Isle	337	299	-38	-11.3%	223	221	-2	-0.9%
Roscommon	507	621	114	22.5%	336	558	222	66.1%
Saginaw	8,427	6,795	-1,632	-19.4%	6,415	5,508	-907	-14.1%
St Clair	4,683	4,351	-332	-7.1%	3,705	3,933	228	6.2%
St Joseph	1,917	1,821	-96	-5.0%	1,168	1,275	107	9.2%
Sanilac	895	895	0	0.0%	523	643	120	22.9%
Schoolcraft	204	220	16	7.8%	138	160	22	15.9%
Shiawassee	2,261	2,274	13	0.6%	1,832	1,977	145	7.9%
Tuscola	1,998	1,341	-657	-32.9%	1,504	1,101	-403	-26.8%
Van Buren	2,487	3,314	827	33.3%	1,813	2,804	991	54.7%
Washtenaw	18,907	17,041	-1,866	-9.9%	16,369	15,576	-793	-4.8%
Wayne	54,186	57,533	3,347	6.2%	49,123	54,380	5,257	10.7%
Wexford	1,371	1,181	-190	-13.9%	885	851	-34	-3.8%
Statewide	366,362	357,210	-9,152	-2.5%	297,834	313,692	15,858	5.3%



**Exhibit 14.** Family and Group Home Child Care Slots

County	Total family slots, 2010	Total family slots, 2017	Change in total family slots	Percent change in total family slots	Total group home slots, 2010	Total group home slots, 2017	Change in total group home slots	Percent change in total group home slots
Alcona	30	18	-12	-40.0%	36	48	12	33.3%
Alger	36	18	-18	-50.0%	12	12	0	0.0%
Allegan	658	420	-238	-36.2%	440	300	-140	-31.8%
Alpena	210	150	-60	-28.6%	168	132	-36	-21.4%
Antrim	90	66	-24	-26.7%	120	36	-84	-70.0%
Arenac	48	24	-24	-50.0%	84	48	-36	-42.9%
Baraga	0	0	0	N/A	36	24	-12	-33.3%
Barry	268	162	-106	-39.6%	276	216	-60	-21.7%
Bay	410	209	-201	-49.0%	607	360	-247	-40.7%
Benzie	162	46	-116	-71.6%	72	24	-48	-66.7%
Berrien	575	354	-221	-38.4%	720	480	-240	-33.3%
Branch	270	222	-48	-17.8%	204	168	-36	-17.6%
Calhoun	789	376	-413	-52.3%	612	288	-324	-52.9%
Cass	188	114	-74	-39.4%	288	132	-156	-54.2%
Charlevoix	168	72	-96	-57.1%	252	156	-96	-38.1%
Cheboygan	147	102	-45	-30.6%	192	60	-132	-68.8%
Chippewa	191	156	-35	-18.3%	132	168	36	27.3%
Clare	84	52	-32	-38.1%	180	168	-12	-6.7%
Clinton	513	234	-279	-54.4%	492	348	-144	-29.3%
Crawford	78	54	-24	-30.8%	36	24	-12	-33.3%
Delta	219	114	-105	-47.9%	48	24	-24	-50.0%
Dickinson	132	90	-42	-31.8%	60	84	24	40.0%
Eaton	720	474	-246	-34.2%	600	444	-156	-26.0%
Emmet	106	60	-46	-43.4%	120	108	-12	-10.0%
Genesee	828	528	-300	-36.2%	1,721	824	-897	-52.1%
Gladwin	54	48	-6	-11.1%	132	72	-60	-45.5%
Gogebic	48	42	-6	-12.5%	36	24	-12	-33.3%
Grand Traverse	806	510	-296	-36.7%	312	312	0	0.0%
Gratiot	346	232	-114	-32.9%	360	396	36	10.0%
Hillsdale	180	126	-54	-30.0%	252	228	-24	-9.5%
Houghton	162	126	-36	-22.2%	96	84	-12	-12.5%
Huron	126	120	-6	-4.8%	132	108	-24	-18.2%



County	Total family slots, 2010	Total family slots, 2017	Change in total family slots	Percent change in total family slots	Total group home slots, 2010	Total group home slots, 2017	Change in total group home slots	Percent change in total group home slots
Ingham	1,204	641	-563	-46.8%	1,332	900	-432	-32.4%
Ionia	405	231	-174	-43.0%	372	240	-132	-35.5%
Iosco	42	18	-24	-57.1%	175	142	-33	-18.9%
Iron	42	18	-24	-57.1%	12	24	12	100.0%
Isabella	294	174	-120	-40.8%	408	360	-48	-11.8%
Jackson	612	390	-222	-36.3%	970	480	-490	-50.5%
Kalamazoo	1,373	785	-588	-42.8%	823	756	-67	-8.1%
Kalkaska	105	48	-57	-54.3%	84	48	-36	-42.9%
Kent	4,325	2,752	-1,573	-36.4%	1,726	1,039	-687	-39.8%
Keweenaw	6	12	6	100.0%	0	0	0	N/A
Lake	24	12	-12	-50.0%	48	36	-12	-25.0%
Lapeer	127	86	-41	-32.3%	393	216	-177	-45.0%
Leelanau	102	66	-36	-35.3%	72	60	-12	-16.7%
Lenawee	352	216	-136	-38.6%	672	432	-240	-35.7%
Livingston	471	280	-191	-40.6%	336	156	-180	-53.6%
Luce	48	12	-36	-75.0%	24	7	-17	-70.8%
Mackinac	62	54	-8	-12.9%	72	36	-36	-50.0%
Macomb	1,927	1,193	-734	-38.1%	1,509	887	-622	-41.2%
Manistee	96	54	-42	-43.8%	120	84	-36	-30.0%
Marquette	288	150	-138	-47.9%	132	144	12	9.1%
Mason	233	143	-90	-38.6%	300	204	-96	-32.0%
Mecosta	174	48	-126	-72.4%	180	180	0	0.0%
Menominee	96	60	-36	-37.5%	60	72	12	20.0%
Midland	469	306	-163	-34.8%	552	408	-144	-26.1%
Missaukee	108	30	-78	-72.2%	108	108	0	0.0%
Monroe	366	233	-133	-36.3%	494	283	-211	-42.7%
Montcalm	222	174	-48	-21.6%	348	310	-38	-10.9%
Montmorency	24	12	-12	-50.0%	72	60	-12	-16.7%
Muskegon	910	571	-339	-37.3%	1,104	840	-264	-23.9%
Newaygo	249	102	-147	-59.0%	240	96	-144	-60.0%

County	Total family slots, 2010	Total family slots, 2017	Change in total family slots	Percent change in total family slots	Total group home slots, 2010	Total group home slots, 2017	Change in total group home slots	Percent change in total group home slots
Oakland	2,259	1,422	-837	-37.1%	3,227	1,948	-1,279	-39.6%
Oceana	120	66	-54	-45.0%	223	180	-43	-19.3%
Ogemaw	102	54	-48	-47.1%	144	72	-72	-50.0%
Ontonagon	6	0	-6	-100.0%	36	36	0	0.0%
Osceola	68	21	-47	-69.1%	168	144	-24	-14.3%
Oscoda	6	18	12	200.0%	12	12	0	0.0%
Otsego	162	143	-19	-11.7%	276	228	-48	-17.4%
Ottawa	2,105	1,405	-700	-33.3%	504	372	-132	-26.2%
Presque Isle	78	42	-36	-46.2%	36	36	0	0.0%
Roscommon	66	18	-48	-72.7%	105	45	-60	-57.1%
Saginaw	941	633	-308	-32.7%	1,071	654	-417	-38.9%
St Clair	427	178	-249	-58.3%	551	240	-311	-56.4%
St Joseph	318	186	-132	-41.5%	431	360	-71	-16.5%
Sanilac	120	84	-36	-30.0%	252	168	-84	-33.3%
Schoolcraft	42	48	6	14.3%	24	12	-12	-50.0%
Shiawassee	249	177	-72	-28.9%	180	120	-60	-33.3%
Tuscola	182	89	-93	-51.1%	312	151	-161	-51.6%
Van Buren	362	246	-116	-32.0%	312	264	-48	-15.4%
Washtenaw	1,256	639	-617	-49.1%	1,282	826	-456	-35.6%
Wayne	2,460	1,624	-836	-34.0%	2,603	1,529	-1,074	-41.3%
Wexford	222	114	-108	-48.6%	264	216	-48	-18.2%
Statewide	34,949	21,397	-13,552	-38.8%	33,579	22,121	-11,458	-34.1%



**Exhibit 15.** Total and Center Child Care Slots for Children Under 30 Months

County	Total slots for children under 30 months, 2010	Total slots for children under 30 months, 2017	Change in total slots for children under 30 months	Percent change in total slots for children under 30 months	Total center slots for children under 30 months, 2010	Total center slots for children under 30 months, 2017	Change in total center slots for children under 30 months	Percent change in total center slots for children under 30 months
Alcona	66	66	0	0.0%	0	0	0	N/A
Alger	48	60	12	25.0%	0	30	30	N/A
Allegan	1,937	1,614	-323	-16.7%	863	925	62	7.2%
Alpena	378	282	-96	-25.4%	0	0	0	N/A
Antrim	413	341	-72	-17.4%	203	239	36	17.7%
Arenac	256	204	-52	-20.3%	124	132	8	6.5%
Baraga	36	68	32	88.9%	0	44	44	N/A
Barry	1,280	922	-358	-28.0%	736	544	-192	-26.1%
Bay	2,221	1,950	-271	-12.2%	1,204	1,381	177	14.7%
Benzie	352	157	-195	-55.4%	118	87	-31	-26.3%
Berrien	3,078	2,490	-588	-19.1%	1,795	1,668	-127	-7.1%
Branch	707	551	-156	-22.1%	239	167	-72	-30.1%
Calhoun	3,478	2,821	-657	-18.9%	2,077	2,157	80	3.9%
Cass	763	422	-341	-44.7%	287	176	-111	-38.7%
Charlevoix	447	228	-219	-49.0%	27	0	-27	-100.0%
Cheboygan	409	232	-177	-43.3%	70	70	0	0.0%
Chippewa	391	479	88	22.5%	68	155	87	127.9%
Clare	398	320	-78	-19.6%	134	100	-34	-25.4%
Clinton	1,847	1,662	-185	-10.0%	842	1,080	238	28.3%
Crawford	114	117	3	2.6%	0	39	39	N/A
Delta	777	696	-81	-10.4%	510	564	54	10.6%
Dickinson	374	369	-5	-1.3%	182	195	13	7.1%
Eaton	3,054	2,595	-459	-15.0%	1,752	1,683	-69	-3.9%
Emmet	552	822	270	48.9%	332	654	322	97.0%
Genesee	10,254	8,477	-1,777	-17.3%	7,723	7,137	-586	-7.6%
Gladwin	212	168	-44	-20.8%	26	48	22	84.6%
Gogebic	154	199	45	29.2%	70	133	63	90.0%
Grand Traverse	2,131	2,068	-63	-3.0%	1,013	1,246	233	23.0%
Gratiot	822	730	-92	-11.2%	116	102	-14	-12.1%

County	Total slots for children under 30 months, 2010	Total slots for children under 30 months, 2017	Change in total slots for children under 30 months	Percent change in total slots for children under 30 months	Total center slots for children under 30 months, 2010	Total center slots for children under 30 months, 2017	Change in total center slots for children under 30 months	Percent change in total center slots for children under 30 months
Hillsdale	600	516	-84	-14.0%	168	162	-6	-3.6%
Houghton	404	514	110	27.2%	146	304	158	108.2%
Huron	769	907	138	17.9%	511	679	168	32.9%
Ingham	7,076	6,156	-920	-13.0%	4,546	4,615	69	1.5%
Ionia	1,520	1,056	-464	-30.5%	761	585	-176	-23.1%
Iosco	284	298	14	4.9%	67	138	71	106.0%
Iron	84	62	-22	-26.2%	30	20	-10	-33.3%
Isabella	1,170	1,009	-161	-13.8%	474	475	1	0.2%
Jackson	2,800	2,354	-446	-15.9%	1,230	1,490	260	21.1%
Kalamazoo	5,339	6,053	714	13.4%	3,155	4,524	1,369	43.4%
Kalkaska	249	174	-75	-30.1%	60	78	18	30.0%
Kent	13,807	13,590	-217	-1.6%	7,820	9,865	2,045	26.2%
Keweenaw	6	12	6	100.0%	0	0	0	N/A
Lake	72	48	-24	-33.3%	0	0	0	N/A
Lapeer	1,289	1,062	-227	-17.6%	769	760	-9	-1.2%
Leelanau	339	335	-4	-1.2%	165	209	44	26.7%
Lenawee	2,209	1,951	-258	-11.7%	1,185	1,303	118	10.0%
Livingston	4,045	4,262	217	5.4%	3,238	3,826	588	18.2%
Luce	117	109	-8	-6.8%	45	90	45	100.0%
Mackinac	186	142	-44	-23.7%	52	52	0	0.0%
Macomb	10,688	11,094	406	3.8%	7,264	9,014	1,750	24.1%
Manistee	418	380	-38	-9.1%	202	242	40	19.8%
Marquette	869	623	-246	-28.3%	449	329	-120	-26.7%
Mason	620	517	-103	-16.6%	87	170	83	95.4%
Mecosta	724	603	-121	-16.7%	370	375	5	1.4%
Menominee	295	226	-69	-23.4%	139	94	-45	-32.4%
Midland	2,531	2,380	-151	-6.0%	1,558	1,666	108	6.9%
Missaukee	338	295	-43	-12.7%	122	157	35	28.7%
Monroe	2,728	2,087	-641	-23.5%	1,875	1,584	-291	-15.5%
Montcalm	866	653	-213	-24.6%	296	187	-109	-36.8%
Montmorency	116	72	-44	-37.9%	20	0	-20	-100.0%
Muskegon	3,858	2,887	-971	-25.2%	1,856	1,476	-380	-20.5%

County	Total slots for children under 30 months, 2010	Total slots for children under 30 months, 2017	Change in total slots for children under 30 months	Percent change in total slots for children under 30 months	Total center slots for children under 30 months, 2010	Total center slots for children under 30 months, 2017	Change in total center slots for children under 30 months	Percent change in total center slots for children under 30 months
Newaygo	830	679	-151	-18.2%	347	481	134	38.6%
Oakland	27,790	27,674	-116	-0.4%	22,328	24,316	1,988	8.9%
Oceana	672	529	-143	-21.3%	329	283	-46	-14.0%
Ogemaw	418	175	-243	-58.1%	172	49	-123	-71.5%
Ontonagon	42	36	-6	-14.3%	0	0	0	N/A
Osceola	338	446	108	32.0%	102	281	179	175.5%
Oscoda	78	30	-48	-61.5%	60	0	-60	-100.0%
Otsego	617	615	-2	-0.3%	179	244	65	36.3%
Ottawa	6,184	6,454	270	4.4%	3,587	4,701	1,114	31.1%
Presque Isle	114	78	-36	-31.6%	0	0	0	N/A
Roscommon	259	289	30	11.6%	88	226	138	156.8%
Saginaw	5,014	4,190	-824	-16.4%	3,026	2,915	-111	-3.7%
St Clair	2,290	1,703	-587	-25.6%	1,324	1,297	-27	-2.0%
St Joseph	1,462	1,133	-329	-22.5%	719	593	-126	-17.5%
Sanilac	444	372	-72	-16.2%	72	120	48	66.7%
Schoolcraft	66	60	-6	-9.1%	0	0	0	N/A
Shiawassee	1,161	1,458	297	25.6%	744	1,173	429	57.7%
Tuscola	1,124	720	-404	-35.9%	630	480	-150	-23.8%
Van Buren	1,555	1,601	46	3.0%	887	1,091	204	23.0%
Washtenaw	10,364	8,916	-1,448	-14.0%	7,826	7,475	-351	-4.5%
Wayne	23,153	26,542	3,389	14.6%	18,124	23,417	5,293	29.2%
Wexford	564	476	-88	-15.6%	90	146	56	62.2%
Statewide	187,904	177,713	-10,191	-5.4%	119,805	134,513	14,708	12.3%



**Exhibit 16.** Family and Group Child Care Slots for Children Under 30 Months

County	Total family slots for children under 30 months, 2010	Total family slots for children under 30 months, 2017	Change in total family slots for children under 30 months	Percent change in total family slots for children under 30 months	Total group home slots for children under 30 months, 2010	Total group home slots for children under 30 months, 2017	Change in total group home slots for children under 30 months	Percent change in total group home slots for children under 30 months
Alcona	30	18	-12	-40.0%	36	48	12	33.3%
Alger	36	18	-18	-50.0%	12	12	0	0.0%
Allegan	646	413	-233	-36.1%	428	276	-152	-35.5%
Alpena	210	150	-60	-28.6%	168	132	-36	-21.4%
Antrim	90	66	-24	-26.7%	120	36	-84	-70.0%
Arenac	48	24	-24	-50.0%	84	48	-36	-42.9%
Baraga	0	0	0	N/A	36	24	-12	-33.3%
Barry	268	162	-106	-39.6%	276	216	-60	-21.7%
Bay	410	209	-201	-49.0%	607	360	-247	-40.7%
Benzie	162	46	-116	-71.6%	72	24	-48	-66.7%
Berrien	575	354	-221	-38.4%	708	468	-240	-33.9%
Branch	264	216	-48	-18.2%	204	168	-36	-17.6%
Calhoun	789	376	-413	-52.3%	612	288	-324	-52.9%
Cass	188	114	-74	-39.4%	288	132	-156	-54.2%
Charlevoix	168	72	-96	-57.1%	252	156	-96	-38.1%
Cheboygan	147	102	-45	-30.6%	192	60	-132	-68.8%
Chippewa	191	156	-35	-18.3%	132	168	36	27.3%
Clare	84	52	-32	-38.1%	180	168	-12	-6.7%
Clinton	513	234	-279	-54.4%	492	348	-144	-29.3%
Crawford	78	54	-24	-30.8%	36	24	-12	-33.3%
Delta	219	108	-111	-50.7%	48	24	-24	-50.0%
Dickinson	132	90	-42	-31.8%	60	84	24	40.0%
Eaton	702	468	-234	-33.3%	600	444	-156	-26.0%
Emmet	100	60	-40	-40.0%	120	108	-12	-10.0%
Genesee	822	516	-306	-37.2%	1,709	824	-885	-51.8%
Gladwin	54	48	-6	-11.1%	132	72	-60	-45.5%
Gogebic	48	42	-6	-12.5%	36	24	-12	-33.3%
Grand Traverse	806	510	-296	-36.7%	312	312	0	0.0%
Gratiot	346	232	-114	-32.9%	360	396	36	10.0%

County	Total family slots for children under 30 months, 2010	Total family slots for children under 30 months, 2017	Change in total family slots for children under 30 months	Percent change in total family slots for children under 30 months	Total group home slots for children under 30 months, 2010	Total group home slots for children under 30 months, 2017	Change in total group home slots for children under 30 months	Percent change in total group home slots for children under 30 months
Hillsdale	180	126	-54	-30.0%	252	228	-24	-9.5%
Houghton	162	126	-36	-22.2%	96	84	-12	-12.5%
Huron	126	120	-6	-4.8%	132	108	-24	-18.2%
Ingham	1,198	641	-557	-46.5%	1,332	900	-432	-32.4%
Ionia	399	231	-168	-42.1%	360	240	-120	-33.3%
Iosco	42	18	-24	-57.1%	175	142	-33	-18.9%
Iron	42	18	-24	-57.1%	12	24	12	100.0%
Isabella	288	174	-114	-39.6%	408	360	-48	-11.8%
Jackson	600	384	-216	-36.0%	970	480	-490	-50.5%
Kalamazoo	1,373	785	-588	-42.8%	811	744	-67	-8.3%
Kalkaska	105	48	-57	-54.3%	84	48	-36	-42.9%
Kent	4,261	2,686	-1,575	-37.0%	1,726	1,039	-687	-39.8%
Keweenaw	6	12	6	100.0%	0	0	0	N/A
Lake	24	12	-12	-50.0%	48	36	-12	-25.0%
Lapeer	127	86	-41	-32.3%	393	216	-177	-45.0%
Leelanau	102	66	-36	-35.3%	72	60	-12	-16.7%
Lenawee	352	216	-136	-38.6%	672	432	-240	-35.7%
Livingston	471	280	-191	-40.6%	336	156	-180	-53.6%
Luce	48	12	-36	-75.0%	24	7	-17	-70.8%
Mackinac	62	54	-8	-12.9%	72	36	-36	-50.0%
Macomb	1,915	1,193	-722	-37.7%	1,509	887	-622	-41.2%
Manistee	96	54	-42	-43.8%	120	84	-36	-30.0%
Marquette	288	150	-138	-47.9%	132	144	12	9.1%
Mason	233	143	-90	-38.6%	300	204	-96	-32.0%
Mecosta	174	48	-126	-72.4%	180	180	0	0.0%
Menominee	96	60	-36	-37.5%	60	72	12	20.0%
Midland	457	306	-151	-33.0%	516	408	-108	-20.9%
Missaukee	108	30	-78	-72.2%	108	108	0	0.0%
Monroe	366	227	-139	-38.0%	487	276	-211	-43.3%
Montcalm	222	168	-54	-24.3%	348	298	-50	-14.4%
Montmorency	24	12	-12	-50.0%	72	60	-12	-16.7%
Muskegon	898	571	-327	-36.4%	1,104	840	-264	-23.9%

County	Total family slots for children under 30 months, 2010	Total family slots for children under 30 months, 2017	Change in total family slots for children under 30 months	Percent change in total family slots for children under 30 months	Total group home slots for children under 30 months, 2010	Total group home slots for children under 30 months, 2017	Change in total group home slots for children under 30 months	Percent change in total group home slots for children under 30 months
Newaygo	243	102	-141	-58.0%	240	96	-144	-60.0%
Oakland	2,247	1,422	-825	-36.7%	3,215	1,936	-1,279	-39.8%
Oceana	120	66	-54	-45.0%	223	180	-43	-19.3%
Ogemaw	102	54	-48	-47.1%	144	72	-72	-50.0%
Ontonagon	6	0	-6	-100.0%	36	36	0	0.0%
Osceola	68	21	-47	-69.1%	168	144	-24	-14.3%
Oscoda	6	18	12	200.0%	12	12	0	0.0%
Otsego	162	143	-19	-11.7%	276	228	-48	-17.4%
Ottawa	2,105	1,393	-712	-33.8%	492	360	-132	-26.8%
Presque Isle	78	42	-36	-46.2%	36	36	0	0.0%
Roscommon	66	18	-48	-72.7%	105	45	-60	-57.1%
Saginaw	929	621	-308	-33.2%	1,059	654	-405	-38.2%
St Clair	415	166	-249	-60.0%	551	240	-311	-56.4%
St Joseph	312	180	-132	-42.3%	431	360	-71	-16.5%
Sanilac	120	84	-36	-30.0%	252	168	-84	-33.3%
Schoolcraft	42	48	6	14.3%	24	12	-12	-50.0%
Shiawassee	249	177	-72	-28.9%	168	108	-60	-35.7%
Tuscola	182	89	-93	-51.1%	312	151	-161	-51.6%
Van Buren	356	246	-110	-30.9%	312	264	-48	-15.4%
Washtenaw	1,256	627	-629	-50.1%	1,282	814	-468	-36.5%
Wayne	2,438	1,608	-830	-34.0%	2,591	1,517	-1,074	-41.5%
Wexford	210	114	-96	-45.7%	264	216	-48	-18.2%
Statewide	34,683	21,206	-13,477	-38.9%	33,416	21,994	-11,422	-34.2%







**PUBLIC SECTOR  
CONSULTANTS**

---

230 N. Washington Square  
Suite 300  
Lansing, MI 48933